

Connecting To New Wireless On Campus! (DeVry_Student)

Prior to visiting Campus

1. Java must be installed prior to visiting campus. Go to www.java.com and install, it's free and easy. Make sure to install for Windows, Mac, or Linux depending on what you have for your operating system.



Your Operating Systems firewall must be enabled. Third party firewalls do not count towards this requirement.

Windows: Control Panel > Firewall > On > OK!

<http://windowshelp.microsoft.com/Windows/en-US/help/bfe523a9-7eec-4d3f-add1-2f68b9cfa1c01033.msp#EG>



Mac OS X "OS 10": Open System Preferences and click Sharing. Click firewall then start!

<http://docs.info.apple.com/article.html?path=Mac/10.4/en/mh1042.html>

You must have a DeVry Wireless trusted Antivirus program installed on your system. It must also be up to current date.

Accepted Anti-Virus Programs:

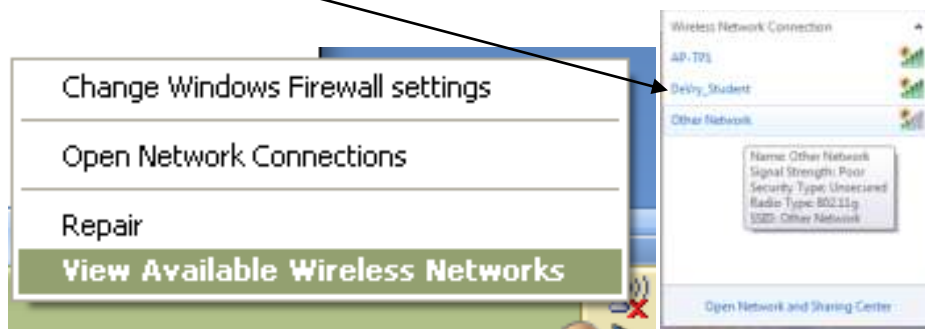
<u>Windows OS:</u>	<u>Mac OS X & Linux:</u>
AT&T Internet Security Suite	Avast! Antivirus
AVG Antivirus	Avira AntiVir PersonalEdition Classic
CA Anti-virus	StandGuard Anti-Virus
Kaspersky Anti-virus	ClamAV
Lavasoft Adaware Antivirus	F-Secure Anti-Virus
McAfee Antivirus	F-Prot Antivirus
Panda Antivirus	AVG Anti-Virus
Sunbelt Antivirus	Kaspersky Anti-Virus
Symantec Norton Antivirus	McAfee LinuxShield
Trend Micro Antivirus	MicroWorld eScan Anti-Virus
Webroot Antivirus	Panda Antivirus
Zone Labs Anti virus	SOFTWIN
SBC Yahoo! Antivirus	BitDefender Antivirus
	Sophos Anti-Virus
	Symantec Corp

This concludes information prior to visiting the wireless location.

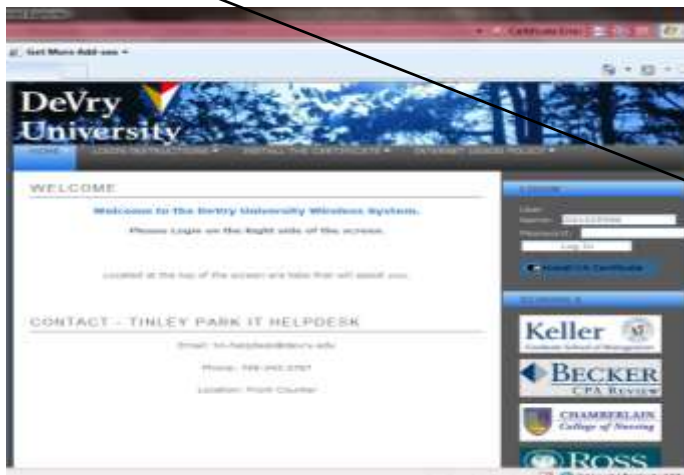
Please, continue for the visiting the campus steps.

When Visiting the campus and using wireless:

Connect to with your Wireless (Under View Available Wireless Networks) to the “DeVry_Student” Wireless network. See next page for an example, and the steps to connect.



1. Open up an internet browser (Internet Explorer, Firefox, Google Chrome etc.)
2. You may see a page regarding an unknown certificate. The reason for this message is that Windows, Mac, and Linux don't have information on it, so it's being cautious.
3. Select the [“Continue to This website \(Not Recommended\)”](#) option
4. An authentication page will then appear. At right hand of the screen, log in with your student/staff credentials (DSI# and Password; Same as logging into the PCs on campus/DVUC)

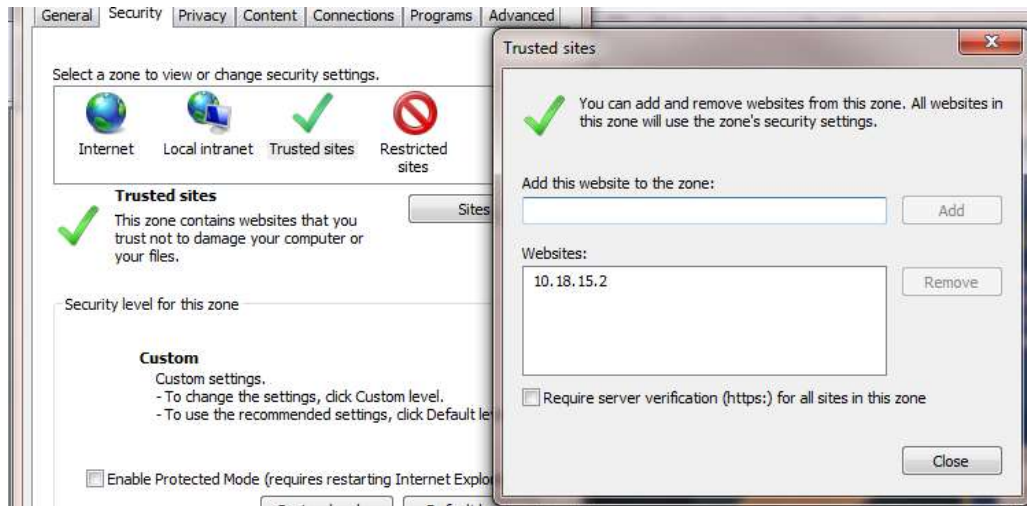


5. Your computer will next be scanned. Please make sure your Firewall is active and your antivirus is installed, up to date with virus definitions and enabled. Once your PC passes the scan you will be able to access the internet.

Are you a Vista User? If the log on page does not auto populate make sure to...

In Internet Explorer:

1. Go to Tools > Internet Options
2. Under the "Security" Tab Click on Trusted Sites and add "10.18.15.2"
3. Click close
4. Confirm the "Enable Protection mode" checkbox is Unchecked.
5. Ok
6. Close all windows
7. retry



Please stop by room 1136 (counter) and we will be more than willing to troubleshoot the issue you're experiencing.

If a user has Skype, Limewire, Frostwire, bittorrent, and/or similar programs installed and running when the scan on blue socket they will be denied access.

If they quit such peer to peer application and close all browsers, and login and scan they will be permitted access, if they meet the requirements. If at a time they invoke the program they will be temporality revoked access, until reboot and log in with program deactivated.

IT Helpdesk

708-342-3767

tinhelpdesk@devry.edu

10/16/09